

Daily Outlook

GLOBAL STOCK INDEX

Counter	News	Trend	Support	Resistance
<u>DJIA Futures</u>	Saham A.S. menutup perdagangan akhir minggu dengan catatan lemah pada hari Jumat karena keuntungan awal menghilang setelah negosiasi plafon utang A.S. di Washington dihentikan, merusak optimisme bahwa kesepakatan dapat dicapai dalam beberapa hari mendatang untuk menghindari default. Resistance utama 33665, support 33330	↓	33330	33665
<u>S&P 500</u>	Saham A.S. menutup perdagangan akhir minggu dengan catatan lemah pada hari Jumat karena keuntungan awal menghilang setelah negosiasi plafon utang A.S. di Washington dihentikan, merusak optimisme bahwa kesepakatan dapat dicapai dalam beberapa hari mendatang untuk menghindari default. Resistance utama 4220.58, support 4185.08	↓	4185.08	4220.58
<u>Nasdaq</u>	Saham A.S. menutup perdagangan akhir minggu dengan catatan lemah pada hari Jumat karena keuntungan awal menghilang setelah negosiasi plafon utang A.S. di Washington dihentikan, merusak optimisme bahwa kesepakatan dapat dicapai dalam beberapa hari mendatang untuk menghindari default. Resistance utama 13929.83, support 13784.58	↑	13784.58	13929.83
<u>Nikkei Futures</u>	Indeks Nikkei 225 naik 0,77% ditutup pada 30.808 sementara Indeks Topix yang lebih luas naik 0,18% menjadi 2.162 pada hari Jumat, dengan kedua tolok ukur mencapai level tertinggi sejak Agustus 1990 karena pendapatan domestik yang kuat dan yen yang lemah mendorong prospek saham Jepang. Saham lokal juga mengikuti kenaikan di Wall Street semalam karena kemajuan negosiasi plafon utang dan pembaruan perusahaan yang optimis di AS mengangkat sentimen pasar. Resistance utama 30995, support 30680	↑	30680	30995
<u>Hang Seng Futures</u>	Hang Seng melemah 276,68 poin atau 1,4% ditutup pada 19.450,57 pada hari Jumat, yang merupakan penutupan terendah sejak 20 Maret, turun 0,9% untuk mingguan yang merupakan penurunan ketujuh berturut-turut, di tengah penurunan berbasis luas yang menyaksikan sektor teknologi dan konsumen tenggelam sekitar 2 %, masing-masing. Alibaba Group Holdings merosot 6,5% menyusul laporan pendapatan yang lebih lemah dari perkiraan dan rencana untuk memisahkan divisi cloud perusahaan. Resistance utama 19549, support 19282	↓	19282	19549

Closing Prices – 19 Mei 2023

	CLOSE	CHANGE		CLOSE	CHANGE
.DJI	33426.63.	↓ 109.28 / 0.33%	.N225	30808.35	↑ 234.42 / 0.77%
/.SPX	4191.98	↓ 6.07 / 0.14%	.KS200	2537.79	↑ 22.39 / 0.89%
/.IXIC	12657.90	↓ 30.94 / 0.24%	.HSI	19450.57	↓ 276.68 / 1.40%
JPY=	137.95	↓ 0.77 / 0.56%	/.SSEC	3283.54	↓ 13.78 / 0.42%
KRW=	1326.49	↓ 7.44 / 0.56%	/CLc1 (Oil)	71.90	↓ 0.04 / 0.06%

ECONOMIC INDICATOR

DATE	WIB	CT Y	INDICATORS	PER	ACTUAL	FORECAST	PREV.	REV.
Mon/15-May-23	05:30	NZ	Performance Services Index	Apr	49.8	--	54.4	53.8
	06:50	JP	PPI MoM	Apr	0.2%	0.0%	0.0%	0.1%
	06:50	JP	PPI YoY	Apr	5.8%	7.1%	7.2%	7.4%
	13:00	JP	Machine Tool Orders YoY	Apr P	-12.7%	-13%	-15.2%	--
	13:30	CH	Producer & Import Prices YoY	Apr	1.0%	1.1%	2.1%	--
	13:30	CH	Producer & Import Prices MoM	Apr	0.2%	-0.1%	0.2%	--
	16:00	EZ	Industrial Production SA MoM	Mar	-4.1%	-2.5%	1.5%	--
	16:00	EZ	Industrial Production WDA YoY	Mar	-1.4%	0.9%	2%	--
	16:00	EZ	EU Commission Economic Forecasts					
	19:10	EZ	ECB's Nagel Speaks					
	19:15	CA	Housing Starts	Apr	261.6k	224.6k	213.9k	213.8k
	19:30	CA	Wholesale Trade Sales MoM	Mar	-0.1%	-0.4%	-1.7%	-1.4%
	19:30	US	Empire Manufacturing	May	-31.8	-3.7	10.8	--
	19:45	US	Fed's Bostic Has Opening Remarks at Financial Markets...					
	20:00	CA	Existing Home Sales MoM	Apr		--	1.4%	--
	20:15	US	Fed's Kashkari Takes Part in a Moderated Discussion					
	23:00	GB	BOE's Huw Pill speaks					
Tue/16-May-23	04:00	US	Fed's Cook Gives Commencement Address at UC Berkeley					
	07:30	AU	Westpac Consumer Conf SA MoM	May	-7.9%	-1.7%	9.4%	--
	07:30	AU	Westpac Consumer Conf Index	May	79	82.1	85.8	--
	08:30	AU	RBA Minutes of May Policy Meeting					
	09:00	CN	Industrial Production YoY	Apr	5.6%	10.9%	3.9%	--
	09:00	CN	Industrial Production YTD YoY	Apr	3.6%	4.9%	3%	--
	09:00	CN	Retail Sales YTD YoY	Apr	8.46%	8.2%	5.8%	5.76%
	09:00	CN	Retail Sales YoY	Apr	18.4%	21%	10.6%	--
	09:00	CN	Surveyed Jobless Rate	Apr	5.2%	5.3%	5.3%	--
	13:00	GB	Payrolled Employees Monthly Change	Apr	-136k	15k	31k	42k
	13:00	GB	Claimant Count Rate	Apr			3.9%	--
	13:00	GB	Jobless Claims Change	Apr	46.7k	31.2k	28.2k	26.5k
	13:00	GB	Average Weekly Earnings 3M/YoY	Mar	5.8%	5.8%	5.9%	5.8%
	13:00	GB	Weekly Earnings ex Bonus 3M/YoY	Mar	6.7%	6.8%	6.6%	--
	13:00	GB	ILO Unemployment Rate 3Mths	Mar	3.9%	3.8%	3.8%	--
	13:00	GB	Employment Change 3M/3M	Mar	182k	120k	169k	--
	15:15	EZ	ECB's Makhlof Speaks					
	16:00	EZ	ZEW Survey Expectations	May	-9.4	-1.0	6.4	--
	16:00	EZ	GDP SA QoQ	1Q P	0.1%	0.1%	0.1%	0.3%
	16:00	EZ	GDP SA YoY	1Q P	1.3%	1.3%	1.3%	--
	16:00	EZ	Trade Balance SA	Mar		--	-0.1b	--
	16:00	EZ	Trade Balance NSA	Mar	25.6b	-12.7	4.6b	3.7b
	16:00	EZ	Employment QoQ	1Q P	0.6%	0.3%	0.3%	--
	16:00	EZ	Employment YoY	1Q P	1.7%	0.4%	1.5%	--
	16:00	DE	ZEW Survey Expectations	May	-10.7	-5.3	4.1	--
	16:00	DE	ZEW Survey Current Situation	May	-34.8	-37.0	-32.5	--
	19:15	US	Fed's Mester Discusses the economic and Policy Outlook					
	19:30	CA	Manufacturing Sales MoM	Mar	0.7%	0.7%	-3.6%	--
	19:30	CA	CPI NSA MoM	Apr	0.7%	0.4%	0.5%	--
	19:30	CA	CPI YoY	Apr	4.4%	4.1%	4.3%	--
	19:30	CA	Consumer Price Index	Apr		--	155.3	--
	19:30	CA	CPI Core- Trim YoY	Apr	4.2%	4.1%	4.4%	--
	19:30	CA	CPI Core- Median YoY	Apr	4.2%	4.3%	4.6%	4.5%
	19:30	US	Retail Sales Advance MoM	Apr	0.4%	0.7%	-1%	-0.7%
19:30	US	Retail Sales Ex Auto MoM	Apr	0.4%	0.5%	-0.8%	-0.5%	
19:30	US	Retail Sales Ex Auto and Gas	Apr	0.6%	0.2%	-0.3%	-0.5%	
20:15	US	Industrial Production MoM	Apr	0.5%	0.0%	0.4%	0.0%	
20:15	US	Capacity Utilization	Apr	79.7%	79.8%	79.8%	79.4%	
20:15	US	Manufacturing (SIC) Production	Apr	1%	-0.2%	-0.5%	-0.8%	
21:00	EZ	ECB's Lagarde Speaks						
21:00	US	Fed's Barr Testifies Before House Financial Services Committee						
21:00	US	Business Inventories	Mar	-0.1%	0.1%	0.2%	--	
21:00	US	NAHB Housing Market Index	May	50	45	45	--	
23:15	US	Fed's Williams Discusses Economic Outlook and Monetary...						
Wed/17-May-23	02:15	US	Fed's Logan Moderates Panel Discussion at Atlanta Fed conferen					
	06:00	US	Fed's Bostic and Goolsbee Discuss the Economic Outlook					

	06:50	JP	GDP Annualized SA QoQ	1Q P	1.6%	0.7%	0.1%	-0.1%
	06:50	JP	GDP SA QoQ	1Q P	0.4%	0.1%	0.0%	--
	06:50	JP	GDP Nominal SA QoQ	1Q P	-0.3%	-0.2%	0.4%	--
	06:50	JP	GDP Deflator YoY	1Q P	2.1%	2%	1.2%	--
	06:50	JP	GDP Private Consumption QoQ	1Q P	0.6%	0.4%	0.3%	0.2%
	06:50	JP	GDP Business Spending QoQ	1Q P	0.9%	-0.4%	-0.5%	-0.7%
	06:50	JP	Inventory Contribution % GDP	1Q P		0.1%	-0.5%	--
	06:50	JP	Net Exports Contribution % GDP	1Q P		-0.2%	0.4%	--
	07:30	AU	Westpac Leading Index MoM	Apr		--	-0.01%	--
	08:30	AU	Wage Price Index QoQ	1Q	0.8%	0.9%	0.8%	--
	08:30	AU	Wage Price Index YoY	1Q	3.7%	3.6%	3.3%	3.4%
	11:30	JP	Industrial Production MoM	Mar F	1.1%	--	4.6%	--
	11:30	JP	Industrial Production YoY	Mar F	-0.6%	--	-0.5%	--
	11:30	JP	Capacity Utilization MoM	Mar	0.8%	--	3.9%	--
	16:00	EZ	CPI YoY	Apr F	7%	7%	6.9%	--
	16:00	EZ	CPI MoM	Apr F	0.6%	0.7%	0.9%	--
	16:00	EZ	CPI Core YoY	Apr F	5.6%	5.6%	5.7%	--
	19:30	US	Housing Starts	Apr	1401k	1400k	1420k	1371k
	19:30	US	Building Permits	Apr	1416k	1437k	1437k	--
	19:30	US	Housing Starts MoM	Apr	2.2%	-1.7%	-0.8%	-4.5%
	19:30	US	Building Permits MoM	Apr	-1.5%	-0.2%	-3%	--
	21:30	US	DOE U.S. Crude Oil Inventories	12-May	5040k	-920k	2951k	--
	21:30	US	DOE Cushing OK Crude Inventory	12-May	1461k	--	397k	--
	21:30	US	DOE U.S. Gasoline Inventories	12-May	-1381k	-1060k	-3168k	--
	21:30	US	DOE U.S. Distillate Inventory	12-May	80k	57k	-4170k	--
	21:30	US	DOE U.S. Refinery Utilization	12-May	1.0%	0.5%	0.3%	--
	22:15	EZ	ECB's Guindos Speaks					
Thu/18-May-23	05:45	NZ	PPI Output QoQ	1Q	0.3%	0.8%	0.9%	--
	05:45	NZ	PPI Input QoQ	1Q	0.2%	0.5%	0.5%	--
	06:50	JP	Trade Balance	Apr	¥-432.4b	¥-613.8b	¥-754.5b	¥-755.1b
	06:50	JP	Trade Balance Adjusted	Apr	¥-1020b	¥-1073.0b	¥1209.9b	¥-1210b
	06:50	JP	Exports YoY	Apr	2.6%	3%	4.3%	--
	06:50	JP	Imports YoY	Apr	-2.3%	-0.3%	7.3%	--
	08:00	AU	Consumer Inflation Expectation	May		--	4.6%	--
	08:30	AU	Part Time Employment Change	Apr	22.8k	--	-19.2k	-21.4k
	08:30	AU	Employment Change	Apr	-4.3k	25k	53k	61.1k
	08:30	AU	Unemployment Rate	Apr	3.7%	3.5%	3.5%	--
	08:30	AU	Full Time Employment Change	Apr	-27.1k	--	72.2k	82.5k
	08:30	AU	Participation Rate	Apr	66.7%	66.7%	66.7%	66.8%
	All	CH	Bank Holiday (Ascension Day)					
	14:45	GB	BOE's Huw Pill speaks					
	15:00	EZ	ECB Publishes Economic Bulletin					
	15:30	HK	Unemployment Rate SA	Apr	3%	2.9%	3.1%	--
	19:30	US	Initial Jobless Claims	13-May	242k	254k	264k	--
	19:30	US	Continuing Claims	6-May	1799k	1818k	1813k	1807k
	19:30	US	Philadelphia Fed Business Outlook	May	-10.4	-19.8	-31.3	--
	20:05	US	Fed's Jefferson Gives Speech on Economic Outlook					
	20:30	US	Fed's Barr Testifies Before Senate Banking Committee					
	21:00	CA	Bank of Canada Releases Financial System Review					
	21:00	US	Fed's Logan Speaks at Texas Bankers Association Convention					
	21:00	US	Existing Home Sales	Apr	4.25m	4.3m	4.44m	4.43m
	21:00	US	Existing Home Sales MoM	Apr	-3.4%	-3.6%	-2.4%	-2.6%
	21:00	US	Leading Index	Apr	-0.6%	-0.6%	-1.2%	--
Fri/19-May-23	05:45	NZ	Imports NZD	Apr	NZ\$6.38b	--	NZ\$7.78b	NZ\$7.87b
	05:45	NZ	Exports NZD	Apr	NZ\$6.8b	--	NZ\$6.51b	NZ\$6.28b
	05:45	NZ	Trade Balance NZD	Apr	NZ\$427m	NZ\$-235b	NZ\$-1273m	NZ\$-1586m
	05:45	NZ	Trade Balance 12 Mth YTD NZD	Apr	NZ\$-16800m	NZ\$-17080m	NZ\$-16398m	NZ\$-16760m
	06:01	GB	GfK Consumer Confidence	May	-27	-27	-30	--
	06:30	JP	Natl CPI YoY	Apr	3.5%	2.5%	3.2%	--
	06:30	JP	Natl CPI Ex Fresh Food YoY	Apr	3.4%	3.4%	3.1%	--
	06:30	JP	Natl CPI Ex Fresh Food, Energy YoY	Apr	4.1%	4.2%	3.8%	--
	11:30	JP	Tertiary Industry Index MoM	Mar	-1.7%	0.3%	0.7%	1.7%
	13:00	DE	PPI MoM	Apr	0.3%	-0.5%	-2.6%	-1.4%
	13:00	DE	PPI YoY	Apr	4.1%	4%	7.5%	6.7%
	16:45	GB	BOE's Haskel speaks					
	19:30	CA	Retail Sales MoM	Mar	-1.4%	-1.4%	-0.2%	--
	19:30	CA	Retail Sales Ex Auto MoM	Mar	-0.3%	-0.8%	-0.7%	--
	19:45	US	Fed's Williams Speaks at Monetary Policy Conference					

	20:00	US	Fed's Bowman Takes Part in Discussion at Bankers Convention					
	20:55	EZ	ECB's Schnabel Speaks					
	22:00	EZ	ECB's Schnabel Speaks					
	22:00	US	Fed Chair Powell, Former Chair Bernanke Speak on Policy Panel					
Sat/20-May-23	00:00	US	Baker Hughes U.S. Rig Count	19-May	720	--	731	--
	02:00	EZ	ECB's Lagarde, De Cos on Brazil Central Bank Panel					

DATE	WIB	CT Y	INDICATORS	PER	ACTUAL	FORECAST	PREV.	REV.
22-May - 09-Jun	N/A	EZ	OECD Publishes Economic Outlook					
Mon/22-May-23	06:50	JP	Core Machine Orders YoY	Mar		1.4%	9.8%	--
	06:50	JP	Core Machine Orders MoM	Mar		0.4%	-4.5%	--
	13:30	CH	Industry & Construction Output WDA YoY	1Q		--	4.1%	--
	13:30	CH	Industrial Output WDA YoY	1Q		--	6.1%	--
	15:30	HK	CPI Composite YoY	Apr		2%	1.7%	--
	15:45	EZ	ECB's Vujcic Speaks					
	16:00	EZ	Construction Output MoM	Mar		--	2.3%	--
	16:00	EZ	Construction Output YoY	Mar		--	2.3%	--
	16:00	EZ	ECB Vice President Guindos Speaks					
	18:30	EZ	ECB's Holzmann Speaks					
	19:30	US	Fed's Bullard Speaks on US Economy and Monetary Policy					
	ALL	CA	Bank Holiday (Victoria Day)					
	21:00	EZ	Consumer Confidence	May P		-16.9	-17.5	--
	21:15	EZ	ECB's Lane Speaks					
	21:15	EZ	ECB's Villeroy speaks					
	22:05	US	Fed's Bostic and Barkin Discuss Technology-Enabled...					
Tue/23-May-23	06:00	AU	Judo Bank Australia PMI Composite	May P		--	53	--
	06:00	AU	Judo Bank Australia PMI Mfg	May P		--	48	--
	06:00	AU	Judo Bank Australia PMI Services	May P		--	53.7	--
	07:30	JP	Jibun Bank Japan PMI Composite	May P		--	52.9	--
	07:30	JP	Jibun Bank Japan PMI Mfg	May P		--	49.5	--
	07:30	JP	Jibun Bank Japan PMI Services	May P		--	55.4	--
	14:15	EZ	ECB's Guindos Speaks					
	14:30	DE	HCOB Germany Manufacturing PMI	May P		45	44.5	--
	14:30	DE	HCOB Germany Services PMI	May P		55	56	--
	14:30	DE	HCOB Germany Composite PMI	May P		--	54.2	--
	15:00	EZ	HCOB Eurozone Manufacturing PMI	May P		46	45.8	--
	15:00	EZ	HCOB Eurozone Composite PMI	May P		53.5	54.1	--
	15:00	EZ	HCOB Eurozone Services PMI	May P		55.5	56.2	--
	15:00	EZ	ECB Current Account SA	Mar		--	24.3b	--
	15:00	EZ	ECB's Muller Speaks					
	15:30	GB	S&P Global/CIPS UK Manufacturing PMI	May P		--	47.8	--
	15:30	GB	S&P Global/CIPS UK Services PMI	May P		--	55.9	--
	15:30	GB	S&P Global/CIPS UK Composite PMI	May P		--	54.9	--
	19:30	CA	Industrial Product Price MoM	Apr		0.2%	0.1%	--
	20:00	US	Fed's Logan Gives Welcoming Remarks at Conference on...					
	20:45	US	S&P Global US Manufacturing PMI	May P		50	50.2	--
	20:45	US	S&P Global US Services PMI	May P		52.6	53.6	--
	20:45	US	S&P Global US Composite PMI	May P		--	53.4	--
	21:00	US	New Home Sales	Apr		660k	683k	--
	21:00	US	New Home Sales MoM	Apr		-3.4%	9.6%	--
	21:45	GB	BOE's Haskel speaks at Fed event					
	22:00	EZ	ECB's Villeroy Speaks					
Wed/24-May-23	N/A	EZ	ECB Non-Policy Meeting in Frankfurt					
	00:50	EZ	ECB's Nagel Speaks					
	05:45	NZ	Retail Sales Ex Inflation QoQ	1Q		0.2%	-0.6%	--
	07:30	AU	Westpac Leading Index MoM	Apr		--	-0.01%	--
	09:00	NZ	RBNZ Official Cash Rate	24-May		5.5%	5.25%	--
	13:00	JP	Machine Tool Orders YoY	Apr F		--	-14.4%	--
	13:00	GB	CPIH YoY	Apr		--	8.9%	--
	13:00	GB	CPI MoM	Apr		0.6%	0.8%	--
	13:00	GB	CPI YoY	Apr		8%	10.1%	--
	13:00	GB	CPI Core YoY	Apr		6%	6.2%	--
	13:00	GB	Retail Price Index	Apr		--	367.2	--
	13:00	GB	RPI MoM	Apr		--	0.7%	--
	13:00	GB	RPI YoY	Apr		--	13.5%	--

	13:00	GB	RPI Ex Mort Int.Payments (YoY)	Apr		--	12.6%	--
	13:00	GB	PPI Output NSA MoM	Apr		--	0.1%	--
	13:00	GB	PPI Output NSA YoY	Apr		--	8.7%	--
	13:00	GB	PPI Input NSA MoM	Apr		--	0.2%	--
	13:00	GB	PPI Input NSA YoY	Apr		--	7.6%	--
	14:10	AU	RBA's Jacobs-Speech					
	15:00	DE	IFO Business Climate	May		93	93.6	--
	15:00	DE	IFO Current Assessment	May		94.5	95	--
	15:00	DE	IFO Expectations	May		91.7	92.2	--
	15:30	GB	House Price Index YoY	Mar		--	5.5%	--
	16:30	GB	BOE's Bailey speaks at Net Zero event					
	20:00	GB	BOE Governor Andrew Bailey speaks to WSJ event					
	21:30	US	DOE U.S. Crude Oil Inventories	19-May		--	5040k	--
	21:30	US	DOE Cushing OK Crude Inventory	19-May		--	1461k	--
	21:30	US	DOE U.S. Gasoline Inventories	19-May		--	-1381k	--
	21:30	US	DOE U.S. Distillate Inventory	19-May		--	80k	--
	21:30	US	DOE U.S. Refinery Utilization	19-May		--	1%	--
Thu/25-May-23	01:00	US	FOMC Meeting Minutes	3-May		--	--	--
	13:00	DE	GDP SA QoQ	1Q F		0.0%	0.0%	--
	13:00	DE	GDP NSA YoY	1Q F		0.2%	0.2%	--
	13:00	DE	GDP WDA YoY	1Q F		--	-0.1%	--
	13:00	DE	GfK Consumer Confidence	Jun		-24.3	-25.7	--
	16:00	EZ	ECB's Guindos Speaks in Brussels					
	17:30	EZ	ECB's Nagel Speaks					
	18:00	CA	CFIB Business Barometer	May		--	55.7	--
	18:15	EZ	ECB's Villeroy speaks in Paris					
	19:30	CA	Payroll Employment Change - SEPH	Mar		--	62.5k	--
	19:30	US	Initial Jobless Claims	20-May		--	242k	--
	19:30	US	Continuing Claims	13-May		--	1799k	--
	19:30	US	GDP Annualized QoQ	1Q S		1.1%	1.1%	--
	19:30	US	Personal Consumption	1Q S		--	3.7%	--
	19:30	US	GDP Price Index	1Q S		4%	4%	--
	19:30	US	Core PCE QoQ	1Q S		--	4.9%	--
	21:00	US	Pending Home Sales MoM	Apr		--	-5.2%	--
	21:00	US	Pending Home Sales NSA YoY	Apr		--	-23.3%	--
	23:30	GB	BOE's Haskel speaks					
Fri/26-May-23	05:00	NZ	ANZ Consumer Confidence Index	May		--	79.3	--
	05:00	NZ	ANZ Consumer Confidence MoM	May		--	2.1%	--
		ALL	Bank Holiday (Buddha's Birthday)					
	06:30	JP	Tokyo CPI YoY	May		3.4%	3.5%	--
	06:30	JP	Tokyo CPI Ex-Fresh Food YoY	May		3.4%	3.5%	--
	06:30	JP	Tokyo CPI Ex-Fresh Food, Energy YoY	May		3.9%	3.8%	--
	06:50	JP	PPI Services YoY	Apr		1.4%	1.6%	--
	08:30	AU	Retail Sales MoM	Apr		0.3%	0.4%	--
	13:00	GB	Retail Sales Inc Auto Fuel MoM	Apr		--	-0.9%	--
	13:00	GB	Retail Sales Inc Auto Fuel YoY	Apr		--	-3.1%	--
	13:00	GB	Retail Sales Ex Auto Fuel MoM	Apr		--	-1%	--
	13:00	GB	Retail Sales Ex Auto Fuel YoY	Apr		--	-3.2%	--
	14:30	EZ	ECB's Vujcic Speaks in Dubrovnik					
	19:30	US	Personal Income	Apr		0.4%	0.3%	--
	19:30	US	Personal Spending	Apr		0.4%	0.0%	--
	19:30	US	Real Personal Spending	Apr		--	0.0%	--
	19:30	US	PCE Deflator MoM	Apr		0.3%	0.1%	--
	19:30	US	PCE Deflator YoY	Apr		--	4.2%	--
	19:30	US	PCE Core Deflator MoM	Apr		0.3%	0.3%	--
	19:30	US	PCE Core Deflator YoY	Apr		4.5%	4.6%	--
	19:30	US	Advance Goods Trade Balance	Apr		-\$85.6b	-\$84.6b	--
	19:30	US	Wholesale Inventories MoM	Apr P		--	0.0%	--
	19:30	US	Retail Inventories MoM	Apr		--	0.7%	--
	19:30	US	Durable Goods Orders	Apr P		-1%	3.2%	--
	19:30	US	Durables Ex Transportation	Apr P		-0.2%	0.2%	--
	19:30	US	Cap Goods Orders Nondef Ex Air	Apr P		--	-0.6%	--
	19:30	US	Cap Goods Ship Nondef Ex Air	Apr P		--	-0.5%	--
	21:00	US	U. of Mich. Sentiment	May F		57.7	57.7	--
	21:00	US	U. of Mich. Current Conditions	May F		--	64.5	--
	21:00	US	U. of Mich. Expectations	May F		--	53.4	--
	21:00	US	U. of Mich. 1 Yr Inflation	May F		--	4.5%	--
	21:00	US	U. of Mich. 5-10 Yr Inflation	May F		--	3.2%	--
Sat/27-May-23	00:00	US	Baker Hughes U.S. Rig Count	26-May		--	--	--

Dow Jones (DJ – JUN)

Exp. Date: 15 June 2023



RESISTANCE	34000	
	33863	
	33665	
SUPPORT	33330	
	33193	
	32995	
SUGGESTION	BUY	---
	SELL	33500
	S/L	33600
	T/P:	33300 33200

DATE	OPEN	HIGH	LOW	RANGE	CLOSE	SETTLE	CHANGE	CHANGE %	VOLUME
19 May	33621	33726	33391	335	33467	33467	↓ 134	0.40	--

WEEKLY		MAY		2023	
HIGH	LOW	HIGH	LOW	HIGH	LOW
33726 (19/May)	33028 (16/May)	34357 (01/May)	33028 (16/May)	34540 (14/Feb)	31422 (15/Mar)

S&P 500 (SP – JUN)

Exp. Date: 15 June 2023



RESISTANCE	4256.08	
	4241.17	
	4220.58	
SUPPORT	4185.08	
	4170.17	
	4149.58	
SUGGESTION	BUY	---
	SELL	4205.00
	S/L	4235.00
	T/P:	4150.00 4130.00

DATE	OPEN	HIGH	LOW	RANGE	CLOSE	SETTLE	CHANGE	CHANGE %	VOLUME
19 May	4214.50	4226.25	4190.75	35.50	4200.00	4200.00	↓ 10.75	0.26	--

WEEKLY		MAY		2023	
HIGH	LOW	HIGH	LOW	HIGH	LOW
4226.25 (19/May)	4119.25 (16/May)	4226.25 (19/May)	4061.75 (04/May)	4226.25 (19/May)	3808.50 (13/Mar)

Nasdaq (NQ – JUN)

Exp. Date: 15 June 2023



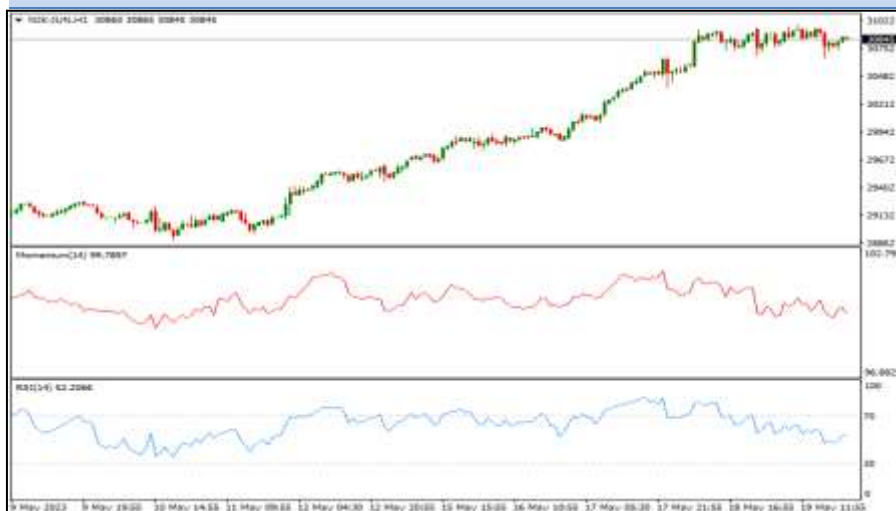
RESISTANCE	14075.08	
	14016.92	
	13929.83	
SUPPORT	13784.58	
	13726.42	
	13639.33	
SUGGESTION	BUY	13810.00
	SELL	---
	S/L	13710.00
	T/P:	14010.00 14110.00

DATE	OPEN	HIGH	LOW	RANGE	CLOSE	SETTLE	CHANGE	CHANGE %	VOLUME
19 May	13909.25	13958.75	13813.50	145.25	13842.75	13842.75	↓ 48.50	0.35	--

WEEKLY		MAY		2023	
HIGH	LOW	HIGH	LOW	HIGH	LOW
13958.75 (19/May)	13349.00 (15/May)	13958.75 (19/May)	13001.25 (04/May)	13958.75 (19/May)	10750.00 (06/Jan)

Nikkei (NIK– JUN)

Exp. Date: 08 June 2023



RESISTANCE	31310	
	31145	
	30995	
SUPPORT	30680	
	30515	
	30365	
SUGGESTION	BUY	30795
	SELL	---
	S/L	30695
	T/P:	30995 31095

DATE	OPEN	HIGH	LOW	RANGE	CLOSE	SETTLE	CHANGE	CHANGE%	VOLUME
19 May	30940	30980	30665	315	30845	30845	↓ 55	0.18	--

WEEKLY		MAY		2023	
HIGH	LOW	HIGH	LOW	HIGH	LOW
30980 (19/May)	29470 (15/May)	30980 (19/May)	28565 (04/May)	30980 (19/May)	25565 (03/Jan)

Hang Seng (HAS – MAY)

Exp. Date: 30 May 2023



DATE	OPEN	HIGH	LOW	RANGE	CLOSE	SETTLE	CHANGE	CHANGE %	VOLUME
19 May	19516	19572	19305	267	19404	19404	↓ 66	0.34	--
WEEKLY		MAY			2023				
HIGH	LOW	HIGH	LOW	HIGH	LOW				
20192 (15/May)	19305 (19/May)	20287 (08/May)	19305 (19/May)	22799 (27/Jan)	18848 (20/Mar)				

VALBURY e-CAPITAL LTD.



DISCLAIMER:

The information contained above is intended to provide general information and does not constitute or purports to be a financial advice, investment advice, trading advice, or any other advice. Any strategies, views or opinions expressed above are not intended to be presented as an offer or solicitation for the purchase or sale of any financial instrument. Client should seek personal professional advice before making any decisions. The client should ensure that financial instruments are suitable for his/her own individual objectives, financial situation and investment needs. This report is prepared for the use of Valbury e-Capital clients. The reproduction and redistribution of this material is strictly prohibited